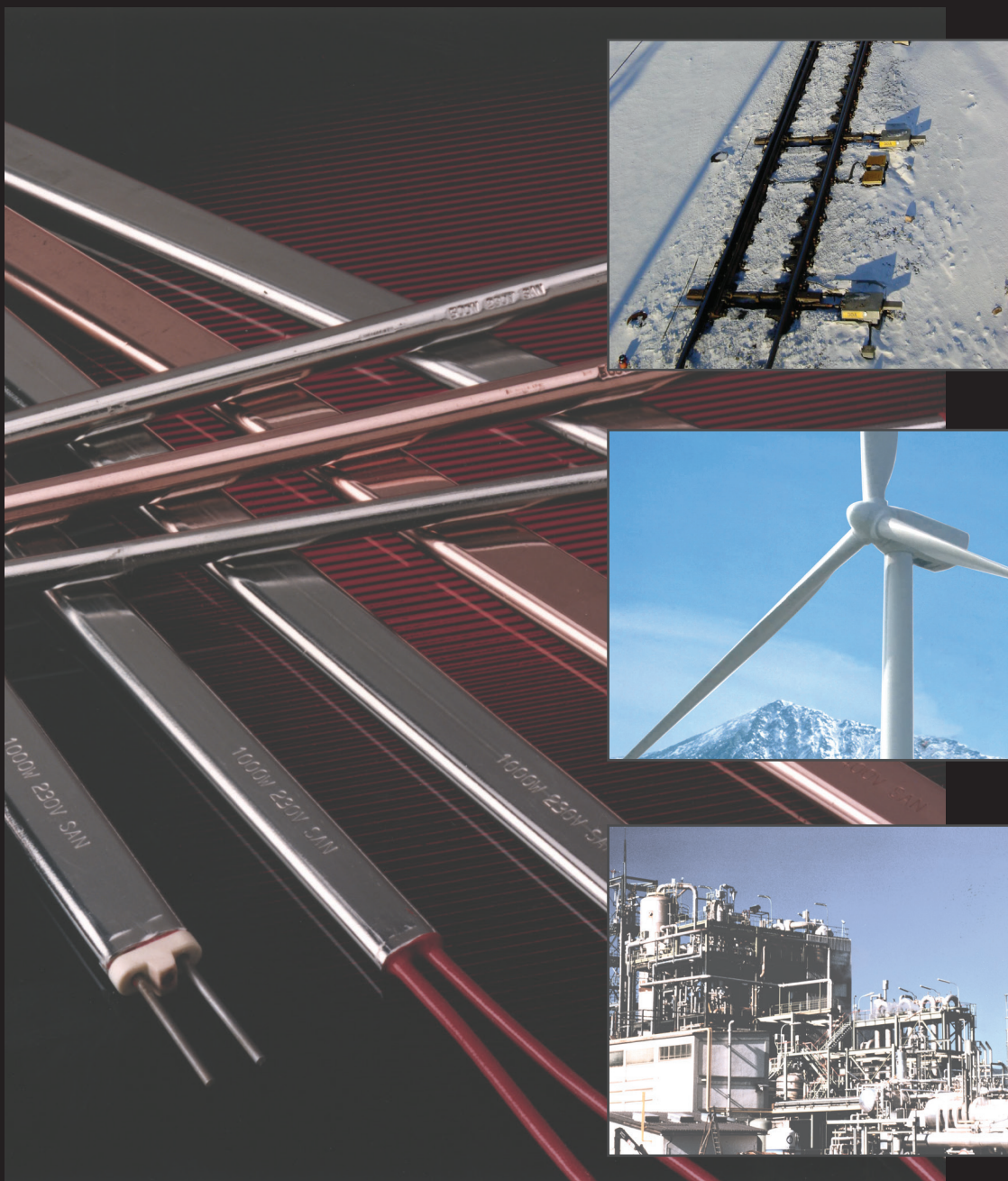


SAN[®] Electro Heat Company **PROFILE**



Gillelejevej 30b
DK-3230 Graested
Tel.: +45 48 39 88 88 - Fax: +45 48 39 88 88
info@san-as.com - www.san-as.com
Member of the NIBE Group

SAN[®]

Electro Heat A bit of history...

1950: SAN Electro Heat a/s - previously Svend A. Nielsen A/S - is being founded in 1950 by engineer Svend A. Nielsen. The company starts as an agency company and grows rapidly within a few years. The agency sales slips into the background, and the company focuses on development and production.

1960: The company employs approx. 12-15 persons, and the facilities on Vaernedamsvej in Copenhagen are becoming too small.

1963: The new factory just south of Esboenderup in North Sealand is now ready. Production, sales and administration are moved to these premises, while the sales office in Copenhagen is kept open for three more years. The production capacity is being extended several times by enlarging the existing factory.

1972: SAN is being changed into a limited company.

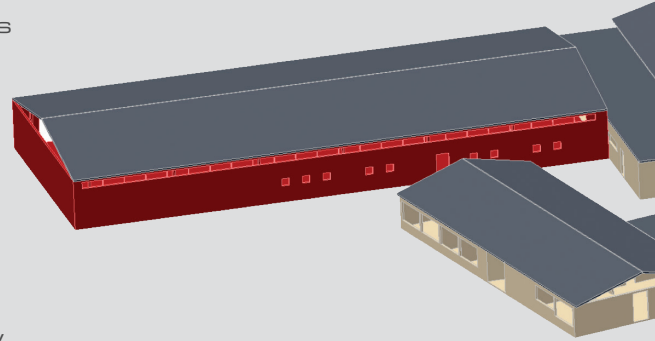
1985: Change of generation is effected.

1996: Change of profile. The logo is being changed into red, and a new font is introduced. Layout on all paper, brochures etc. is being modernized.

1998: SAN builds a new 1500m² factory hall and concentrates stock and shipping department. In the basement we get new changing room and bath facilities, exhaustion- and heat recovery plant, boiler, etc.

2001: The Nielsen family sells the company to the Swedish industry group of companies NIBE Industrier AB. SAN maintains its position now under NIBE Element as probably the most dynamic and flexible company in Europe within design and product development of professional electrical heating equipment.

2003: The company gets a new management. Today we focus on industrial process customers, primarily on the

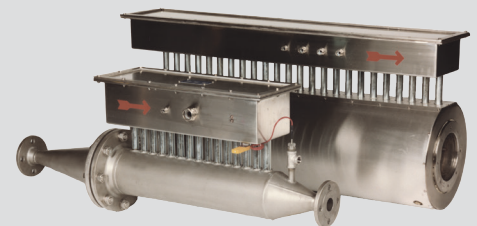
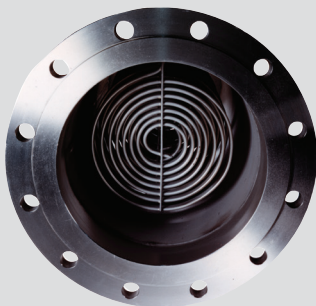


European market.

2004: SAN employs today approx. 50 persons, and our company today counts 3,600m² in total.

2007: The company gets a new management. Our focus areas are now wind power, railway sector, process industry and heating cables.

2008: Change of profile. The company name is changed to SAN Electro Heat a/s, and our logo is re-modernized.



SAN Electro Heat a/s

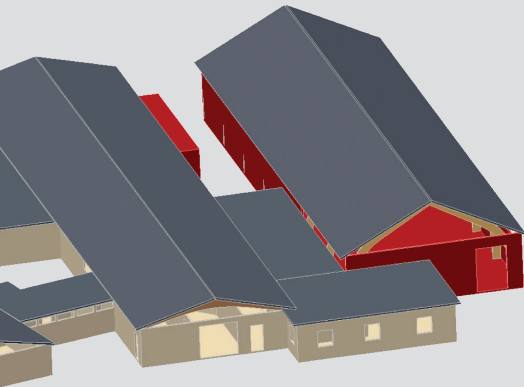
Gillelejevej 30b - DK-3230 Graested - Denmark

Tel.: +45 48 39 88 88 - Fax: +45 48 39 88 88 - info@san-as.com - www.san-as.com

CVR No.: 42 16 59 13

Production: Graested, Denmark

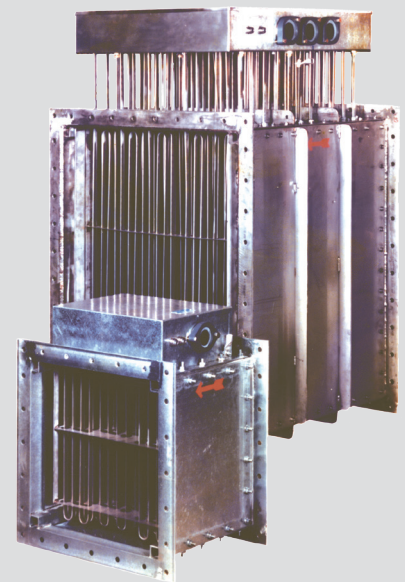
SAN Electro Heat a/s



The most valuable asset of the company is special knowhow about design, product development and manufacturing of professional electrical heating equipment for industrial use.

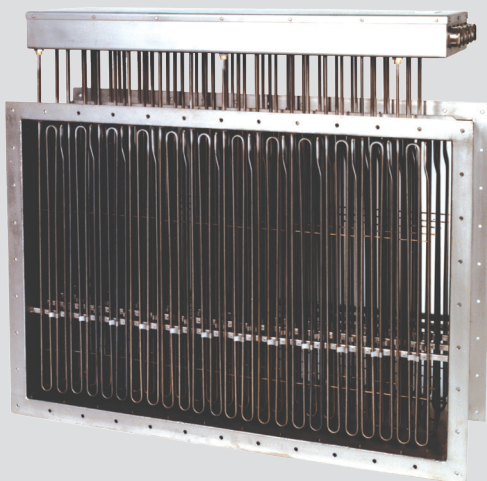
The SAN organization is geared to deliver 100 per cent customized products. Our highly educated and experienced engineers are good consultants and sparring partners for our customers during the solution of an assignment.

SAN thus functions both as a catalyst for a development project and as supplier of the final product. At the same time we ensure and maintain the required quality level, mechanical and electrical dimensioning, approvals and documentation.



Our platform of heating equipment has further been improved through our connection to the NIBE Element, which consists of 20 European manufacturers.

SAN is the spearhead in NIBE Element, when it comes to delivery of electrical heating products to the professional process industry.



UK:

Harold Comerford
H_comerford@btconnect.com
tel.: +44 1432 851999
mobile: +44 7802 853862

Germany:

Wolfgang Biehs
wolfgang.biehs@nibe.de
tel.: +49 6171 887 724
mobile: +49 1622 793 484

China:

Sun Qiang
qsun@nibechina.com
tel.: +86 21 58366522
mobile: +86 1391 680 5151

Production: Shenzhen, China

SAN[®]

Electro Heat

We keep on track...



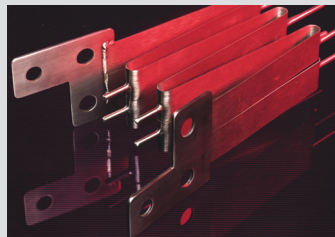
Load Resistors

The SAN load resistors are being delivered worldwide. They are used for test of diesel-electrical locomotives, often in connection with main check of the motor and to insure high and accurate documentation level. The load resistors are customized directly according to type of locomotive and delivered with integrated control system and determined test procedure.



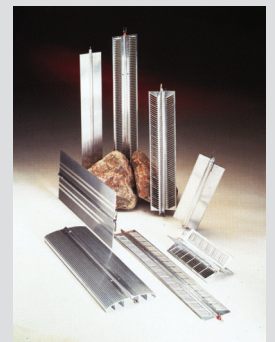
Shunt Resistors

A huge product range is shunt resistors, which are delivered according to the assignment, fit to the actual application. This goes for trains, trams and other rolling stock. The shunt resistors are delivered as complete units, or as sole components as replacement to existing equipment.



Ovens for Rolling Stock

Another part of the SAN product range is special designed ovens for heating of train compartments. The ovens are manufactured from various materials, a.o. aluminium, which gives a light oven, unique heat distribution and a low surface temperature. Our ovens are delivered for all voltages and in double insulated version.



SAN Electro Heat a/s

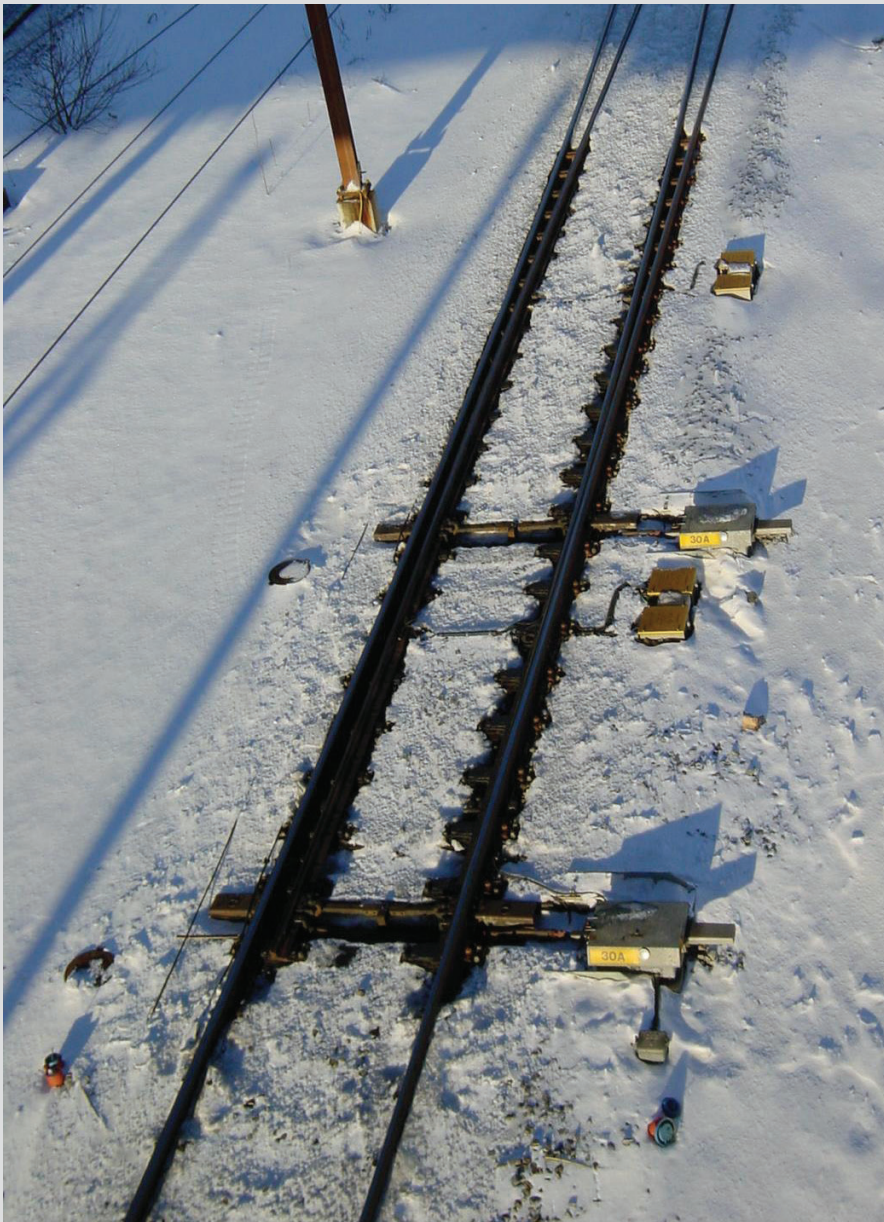
Gillelejevej 30b - DK-3230 Graested - Denmark

Tel.: +45 48 39 88 88 - Fax: +45 48 39 88 88 - info@san-as.com - www.san-as.com

CVR No.: 42 16 59 13

Production: Graested, Denmark

Effective Switch Point Heating...



Heating of switch points is only one of the many products, which SAN Electro Heat a/s has developed and sold for more than 25 years.

After many years of intensive development and test work, the SAN switch point heating elements CWS (Constant Wattage Heating) now found basis for standards in several European countries. SAN is the very biggest of suppliers of switch point heating in Europe. We deliver e.g. to Sweden, Norway, Denmark, Finland, England, Poland, Lithuania, Austria, France Belgium, The Netherlands, Germany, etc.

SAN's greatest asset is total deliveries for the railway sector. We deliver switch point heating and control systems, which give considerable energy savings and are thus more environmentally compatible.

SAN's unique heating systems are designed for voltages from 50V to approx. 1000V, which gives a good flexibility. The products can further be delivered in different steel alloys and with teflon coating. The choice of material depends of the local corrosive environment, and also on this field, SAN offers the best knowhow.



UK:

Harold Comerford
H_comerford@btconnect.com
tel.: +44 1432 851999
mobile: +44 7802 853862

Germany:

Wolfgang Biehs
wolfgang.biehs@nibe.de
tel.: +49 6171 887 724
mobile: +49 1622 793 484

China:

Sun Qiang
qsun@nibechina.com
tel.: +86 21 58366522
mobile: +86 1391 680 5151

Production: Shenzhen, China

SAN[®]

Electro Heat

Heating the power of wind...



High Flexible Silicone Heating Elements and Heating Pads

for maintenance and heating of various applications are customized according to the assignment. They are delivered with or without insulation.

High Watt Immersion Heaters

delivered to fit high tolerance metric drilled holes. They are used for frost protection of e.g. wind measuring equipment.

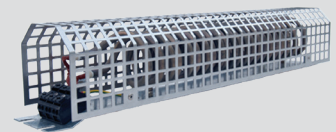
Hot Air Fans and Load Resistors

in special versions, designed for fast control and regulation in connection with fastly changing wind conditions, both air- and water cooling. All equipment is delivered approved according to international standards, including corrosion-, shock- and vibration tests.

Immersion Heaters

for hydraulic heating according to required voltage and approval. All products are designed for easy service.

The special mounting and service conditions in the wind turbine have been considered in all our product designs.



SAN Electro Heat a/s

Gillelejevej 30b - DK-3230 Graested - Denmark

Tel.: +45 48 39 88 88 - Fax: +45 48 39 88 88 - info@san-as.com - www.san-as.com

CVR No.: 42 16 59 13

Production: Graested, Denmark

Process Heating....

Process Heaters

SAN delivers process heaters to a large number of the chemical and petrol chemical industries all over the world.

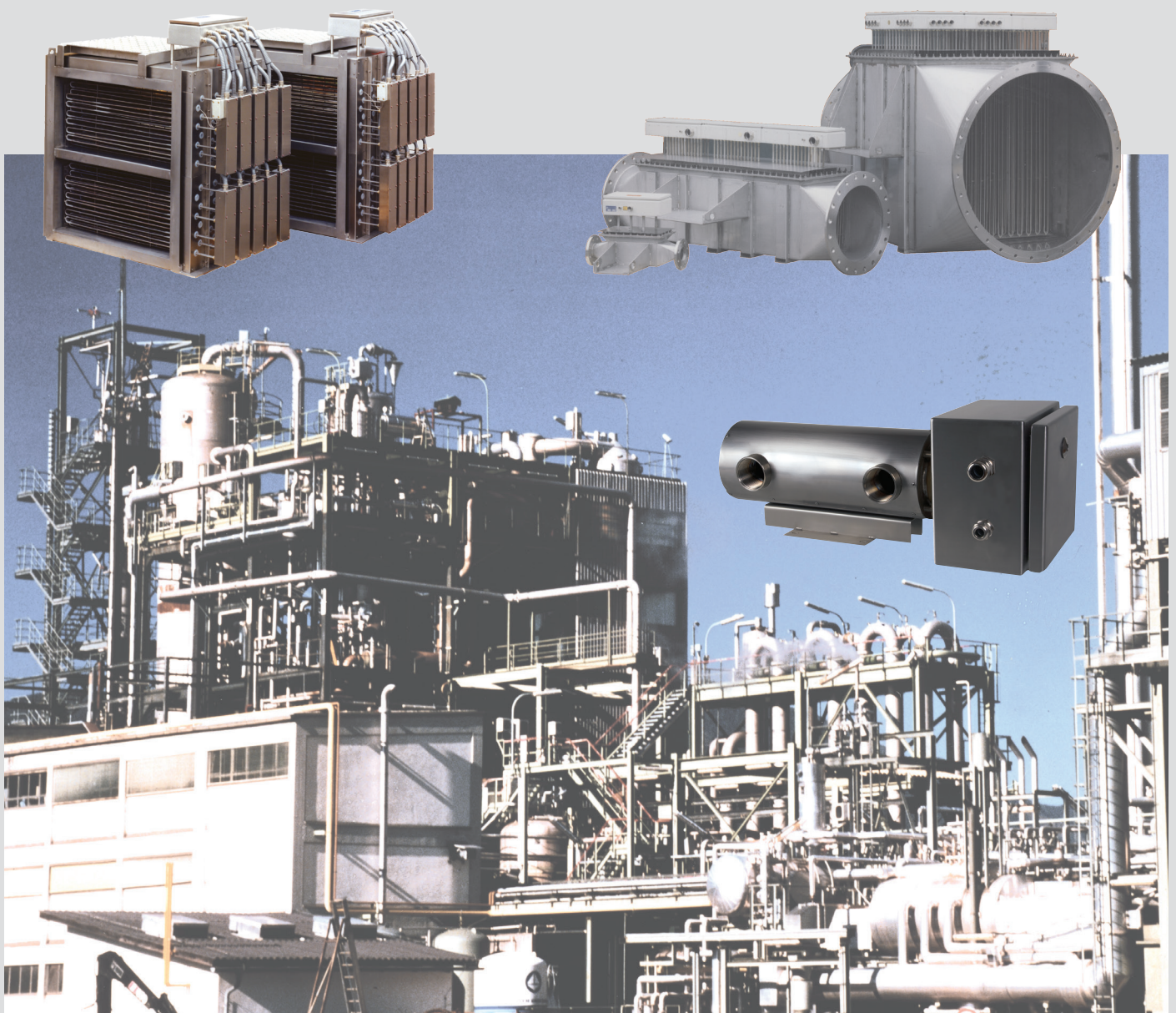
Our highly educated engineers are, because of their great knowhow, capable of solving

even the most difficult jobs.

Therefore customers introduce SAN engineers already at a very early point in their projects.

Heaters for heating of both gasses and fluids are delivered in the required steel alloys,

and approved according to international standards. We deliver SAN heaters for systems with or without pressure, for all voltage levels up to 11kV, for temperatures from -50 to 900°C and for onshore and offshore applications.



UK:

Harold Comerford
H_comerford@btconnect.com
tel.: +44 1432 851999
mobile: +44 7802 853862

Germany:

Wolfgang Biehs
wolfgang.biehs@nibe.de
tel.: +49 6171 887 724
mobile: +49 1622 793 484

China:

Sun Qiang
qsun@nibechina.com
tel.: +86 21 58366522
mobile: +86 1391 680 5151

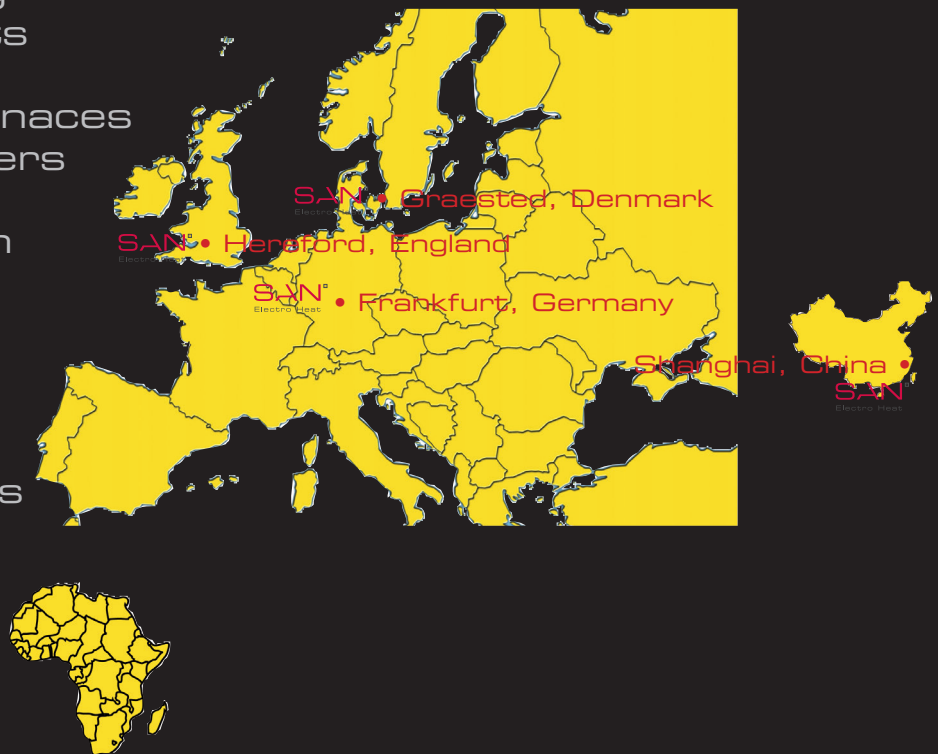
Production: Shenzhen, China

SAN[®] Electro Heat Company **PROFILE**

Gillelejevej 30b
DK-3230 Graested
Tel: +45 48 39 88 88 - Fax: +45 48 39 88 88
info@san-as.com - www.san-as.com

Member of the NIBE Group

- Process Heating
- Heating Elements
- Heating Cables
- Ribbed Tube Furnaces
- Immersion Heaters
- Church Heating
- Frost Protection
- Ex-Material
- Oil Radiators
- Drum Heaters
- Heating Mats
- Flow Heaters
- Air Duct Heaters
- High-voltage
- Resistors
- Controllers



With more than 50 years of experience SAN Electro Heat's most valuable asset is special knowhow about design, product development and manufacturing of professional electrical heating equipment for industrial use.

The company is geared to deliver 100% customized products, and thus functions both as a catalyst for a development project and as supplier of the final product. At the same time we insure and maintain the required quality level, mechanical and electrical dimensioning, approvals and documentation.